

MAYLÉ VÁSQUEZ



Piedra

L I N E S H E E T | S P R I N G | S U M M E R 2 0 2 5



Fuente TOP

SIZE:



SRP: US \$325.00

WP: US \$141.30



Models are wearing XS



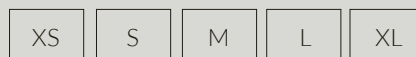
COMPOSITION:
96% Polyester 4% Spandex.

PRODUCT CARE:
Dry Clean

DESCRIPTION:
Lightweight rib fabric with stretch.
Wrap around kimono sleeves crop top.
Multiple ways of wrapping.
V neckline.
Lined bodice.
Unlined sleeves.
Covered elastic waistband in the back for better fit.

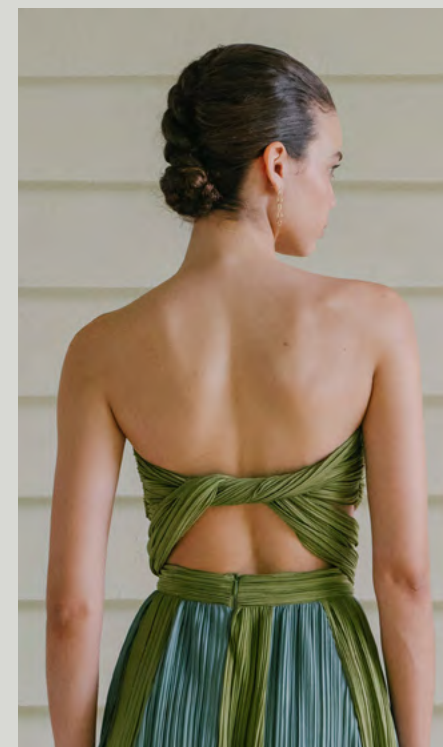
Caliente CROP TOP

SIZE:



SRP: US \$250.00

WP: US \$108.70



Models are wearing XS

COL-



COMPOSITION:

96% Polyester 4% Spandex.

PRODUCT CARE:

Dry Clean

DESCRIPTION:

Lightweight rib fabric with stretch.

Wrap around strapless crop top.

Multiple ways of wrapping.

Straight neckline.

Lined.

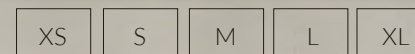
Ruffle details at the bodice ends.



Constante

MAXI DRESS

SIZE:



SRP: US \$490.00

WP: US \$213.04

DESCRIPTION:

Lightweight rib fabric with stretch.

Sleeveless maxi dress.

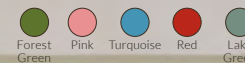
Round neckline.

Lined.

Wrap around piece for knot effect on the side.

Hook-and-eye and hidden zip closure at back.

COL-



COMPOSITION:

96% Polyester 4% Spandex.

PRODUCT CARE:

Dry Clean

Models are wearing XS



Iselle DRESS

SIZE:



SRP: US \$375.00

WP: US \$163.04



Models are wearing XS

COL-



COMPOSITION:

96% Polyester 4% Spandex.

PRODUCT CARE:

Dry Clean

DESCRIPTION:

Lightweight rib fabric with stretch.

Long sleeves maxi dress.

Front round neckline.

Back deep V neckline.

Back ruched detail.

Unlined.

No zipper or buttons, just slip it on.



Agua MIDI DRESS

SIZE:



SRP: US \$355.00

WP: US \$154.35



Models are wearing XS

COL-



COMPOSITION:

96% Polyester 4% Spandex.

PRODUCT CARE:

Dry Clean

DESCRIPTION:

Lightweight rib fabric with stretch with stretch.

Sleeveless wrap around midi dress.

Multiple ways of wrapping.

Deep V neckline.

Lined Bodice.

Unlined Skirt.

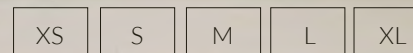
No zipper or buttons, just slip it on.



Frio Frio

MIDI SKIRT

SIZE:



SRP: US \$295.00

WP: US \$128.26

DESCRIPTION:

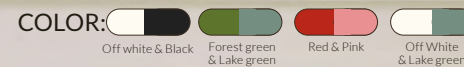
Lightweight rib fabric with stretch.

A Line Midi skirt.

Lined.

Hook-and-eye and hidden zip closure at back.

Visible waistband.



COMPOSITION:

96% Polyester 4% Spandex.

PRODUCT CARE:

Dry Clean

Models are wearing XS



Frio Frio MAXI SKIRT

SIZE:



SRP: US \$390.00

WP: US \$169.57



Models are wearing XS



COMPOSITION:
96% Polyester 4% Spandex.

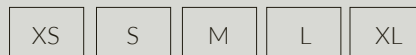
PRODUCT CARE:
Dry Clean

DESCRIPTION:
Lightweight rib fabric with stretch.
A Line Full Length skirt.
Lined.
Hook-and-eye and hidden zip closure at back.
Visible waistband.



Flaidez LONG DRESS

SIZE:



SRP: US \$375.00

WP: US \$163.04



Models are wearing XS



COMPOSITION:
96% Polyester 4% Spandex.

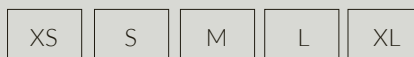
PRODUCT CARE:
Dry Clean

DESCRIPTION:
Lightweight rib fabric with stretch.
Long sleeves midi dress.
Deep V neckline.
Unlined.
No zipper or buttons, just slip it on.
Front ruched detail.



Dapla LONG DRESS

SIZE:

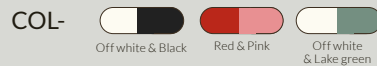


SRP: US \$410.00

WP: US \$178.26



Models are wearing XS



COMPOSITION:
96% Polyester 4% Spandex.

PRODUCT CARE:
Dry Clean

DESCRIPTION:
Lightweight rib fabric with stretch.
Long sleeves midi dress.
Deep V neckline.
Unlined.
No zipper or buttons, just slip it on.
Front ruched detail.

Corriente MIDI DRESS

SIZE:



SRP: US \$375.00

WP: US \$163.04



Models are wearing XS



COMPOSITION:
96% Polyester 4% Spandex.

PRODUCT CARE:
Dry Clean

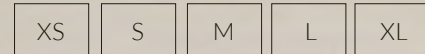
DESCRIPTION:
Lightweight rib fabric with stretch.
Sleeveless midi dress.
Scoop neckline.
Lined.
No zipper or buttons, just slip it on.



Cayo

MAXI DRESS

SIZE:



SRP: US \$490.00

WP: US \$213.04

DESCRIPTION:

Lightweight rib fabric with stretch on bodice and skirt.

Crepe fabric on drop waistband.

Drop waist wrap around maxi dress.

Multiple ways of wrapping.

Deep V neckline.

Lined.

Hook-and-eye and hidden zip closure at back.

COL-



COMPOSITION:

Bodice and skirt: 96% Polyester - 4% Spandex.

Waistband : 100% Polyester

PRODUCT CARE:

Dry Clean

Models are wearing XS



Flajo TOP

SIZE:



SRP: US \$290.00

WP: US \$126.09



Models are wearing XS

COL- 

COMPOSITION:
96% Polyester 4% Spandex.

PRODUCT CARE:
Dry Clean

DESCRIPTION:
Lightweight rib fabric with stretch.
Long sleeves top.
Deep V neckline.
Unlined.
Front Ruched detail.



Oasis PANTS

SIZE:




SRP: US \$295.00

WP: US \$128.26



Models are wearing XS

COL-  Forest Green Pink Turquoise Red Lake Green

COMPOSITION:
96% Polyester 4% Spandex.

PRODUCT CARE:
Dry Clean

DESCRIPTION:
Lightweight rib fabric with stretch.
Long length wide leg pants.
High waisted
Covered elastic waistband.
Unlined.



Cayito

SIZE:



SRP: US \$310.00

WP: US \$134.78



Models are wearing XS

COL- 

COMPOSITION:

Bodice and skirt: 96% Polyester - 4% Spandex.

Waistband : 100% Polyester

PRODUCT CARE:

Dry Clean

DESCRIPTION:

Lightweight rib fabric with stretch on bodice and skirt.

Crepe fabric on waistband.

Wrap around mini dress.

Multiple ways of wrapping.

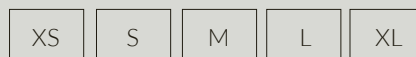
Deep V neckline.

Lined.



Karina MINI DRESS

SIZE:



SRP: US \$350.00

WP: US \$152.17



Models are wearing XS

COL-



COMPOSITION:

96% Polyester 4% Spandex.

PRODUCT CARE:

Dry Clean

DESCRIPTION:

Lightweight rib fabric with stretch.

Long sleeves mini dress.

Round neckline.

Lined.

Hook-and-eye and hidden zip closure at back.

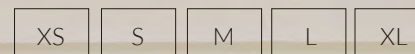
Wrap around piece for knot effect on the side.



Yaque

MAXI DRESS

SIZE:



SRP: US \$520.00

WP: US \$226.09

DESCRIPTION:

Lightweight rib fabric with stretch on bodice and skirt.
Crepe fabric on drop waistband.
Long sleeves wrap around maxi dress.
Drop fitted waist
Deep V neckline.
Lined.
Hook-and-eye and hidden zip closure at back.

COL-



COMPOSITION:

Bodice and skirt: 96% Polyester - 4% Spandex.
Waistband : 100% Polyester

PRODUCT CARE:

Dry Clean

Models are wearing XS



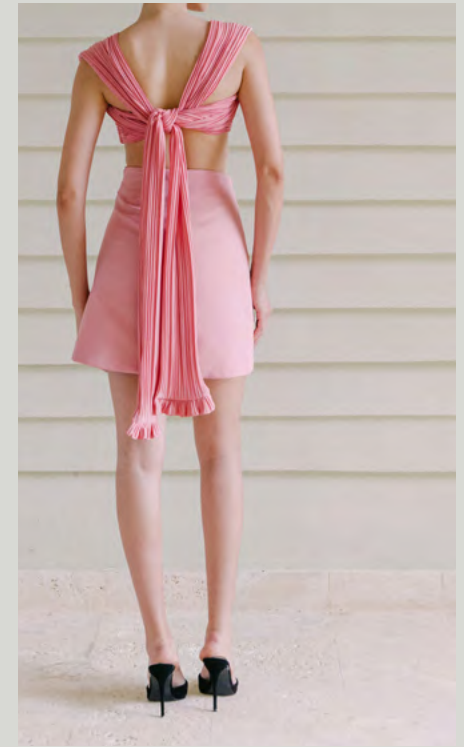
Yana MINI SKIRT

SIZE:



SRP: US \$275.00

WP: US \$119.57



Models are wearing XS

COL-



Black



Pink



Turquoise

COMPOSITION:

Waistband knot: 96% Polyester - 4% Spandex.

PRODUCT CARE:

Dry Clean

DESCRIPTION:

A-line mini skirt.

Front knot in lightweight rib fabric.

Crepe fabric on skirt

Lined.

Hook-and-eye and hidden zip closure at back.



Candaf MAXI DRESS

SIZE:



SRP: US \$610.00

WP: US \$265.22



Models are wearing XS



COMPOSITION:
96% Polyester 4% Spandex.

PRODUCT CARE:
Dry Clean

DESCRIPTION:
Lightweight rib fabric with stretch.
Long sleeves fitted full length dress.
Round neckline.
Lined.
Hook-and-eye and hidden zip closure at back.
Asymmetric front cut.
Two colors.



Cama LONG DRESS

SIZE:



SRP: US \$610.00

WP: US \$265.22



Models are wearing XS



COMPOSITION:
96% Polyester 4% Spandex.

PRODUCT CARE:
Dry Clean

DESCRIPTION:

Lightweight rib fabric with stretch.
Long sleeves full length dress.
Round neckline.
Lined.
Hook-and-eye and hidden zip closure at back.
Asymmetric front cut.
Two colors.



Rio MAXI DRESS

SIZE:



SRP: US \$625.00

WP: US \$271.74



Models are wearing XS



COMPOSITION:
96% Polyester 4% Spandex.

PRODUCT CARE:
Dry Clean

DESCRIPTION:

Lightweight rib fabric with stretch.
Sleeveless full length dress.
Scoop neckline.
Lined.
Hook-and-eye and hidden zip closure at back.
Two colors.



Mao TOP

SIZE:



SRP: US \$310.00

WP: US \$134.78



Models are wearing XS

COLOR:  Off white & Black

COMPOSITION:
96% Polyester 4% Spandex.

PRODUCT CARE:
Dry Clean

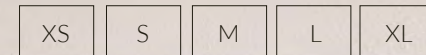
DESCRIPTION:
Lightweight rib fabric with stretch on top and medium stretch crepe fabric on bodice drop waist.
Wrap around top.
Multiple ways of wrapping.
Zip closure at back.
Lined.



Chavon

LONG DRESS

SIZE:



SRP: US \$590.00

WP: US \$256.52

DESCRIPTION:

Lightweight rib fabric with stretch on top,
medium stretch crepe fabric on skirt.

Wrap around full length dress.

Mermaid silhouette.

Multiple ways of wrapping.

Zip closure at back.

Lined.

COLOR:  

Off white & Black

Red & Pink

COMPOSITION:

Bodice:: 96% Polyester - 4% Spandex.

Skirt: 100% Polyester.

PRODUCT CARE:

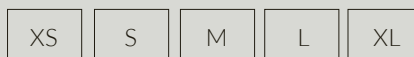
Dry Clean

Models are wearing XS



Nizao LONG DRESS

SIZE:



SRP: US \$590.00

WP: US \$256.52



Models are wearing XS

COL-



Black



Pink



Turquoise

COMPOSITION:

Bodice: 100% Polyester

Skirt: 96% Polyester - 4% Spandex.

PRODUCT CARE:

Dry Clean

DESCRIPTION:

Lightweight rib fabric on skirt, medium stretch crepe fabric on bodice.

Sleeveless maxi dress.

Structured drop waist.

Hook-and-eye and hidden zip closure at back.

Lined.



Nines PANTS

SIZE:

XS	S	M	L	XL
----	---	---	---	----

SRP: US \$375.00

WP: US \$163.04



Models are wearing XS

COL-



COMPOSITION:
100% Polyester

PRODUCT CARE:
Dry Clean

DESCRIPTION:

Medium stretch crepe fabric
Long length wide leg pants.
High waisted
Visible waistline.
Lined.
Hook-and-eye and hidden zip closure
at back.



Esfera BLOUSE

SIZE:

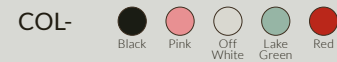


SRP: US \$390.00

WP: US \$169.57



Models are wearing XS



COMPOSITION:
94% Polyester - 6% Spandex.

PRODUCT CARE:
Dry Clean

DESCRIPTION:
Lightweight silk fabric with minimum stretch.
Long raglan sleeves shirt.
Unlined.
Hidden buttons closure at front.
Mother pearl detail at collar.



Pant a PANTS

SIZE:

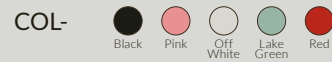


SRP: US \$395.00

WP: US \$171.74



Models are wearing XS



COMPOSITION:
94% Polyester - 6% Spandex.

PRODUCT CARE:
Dry Clean

DESCRIPTION:
Lightweight silk fabric with minimum stretch.
Long length wide leg pants.
High waisted.
Visible waistline.
Unlined.
Hook-and-eye and hidden zip closure at back.

El Limon

FULL LENGTH DRESS

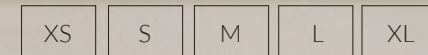




El Limon

FULL LENGTH DRESS

SIZE:



SRP: US \$1,295.00

WP: US \$563.04

DESCRIPTION:

Lightweight silk fabric with minimum stretch.

Full Length dress.

Unlined.

No zipper or buttons, just slip it on.

Removable capes.

Mother pearl and river stone details at collar.

COL-



COMPOSITION:

94% Polyester - 6% Spandex.

PRODUCT CARE:

Dry Clean

Models are wearing XS

Limoncillo

MAXI DRESS





Limoncillo

MAXI DRESS

SIZE:

- XS
- S
- M
- L
- XL

SRP: US \$1,195.00

WP: US \$519.56

DESCRIPTION:

Lightweight silk fabric with minimum stretch.
Maxi dress.
Unlined.
No zipper or buttons, just slip it on.
Removable capes.
Mother pearl details at collar.

- COL- Black Pink Off White Lake Green Red

COMPOSITION:

94% Polyester - 6% Spandex.

PRODUCT CARE:

Dry Clean

Models are wearing XS



Alexander MINI DRESS

SIZE:

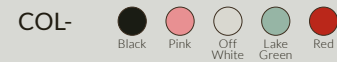


SRP: US \$650.00

WP: US \$282.61



Models are wearing XS



COMPOSITION:
94% Polyester - 6% Spandex.

PRODUCT CARE:
Dry Clean

DESCRIPTION:
Lightweight silk fabric with minimum stretch.
Long raglan sleeves shirt.
Unlined.
Hidden buttons closure at front.
Mother pearl detail at collar.



Do LONG DRESS

SIZE:



SRP: US \$625.00

WP: US \$271.74



Models are wearing XS



COMPOSITION:
94% Polyester - 6% Spandex.

PRODUCT CARE:
Dry Clean

DESCRIPTION:

Lightweight silk fabric with minimum stretch.
Long sleeves wrap around full length dress (Includes side opening for full coverage in neckline).
Unlined.
No zipper or buttons, just slip it on.
Two colors.



Ceiba LONG DRESS

SIZE:



SRP: US \$625.00

WP: US \$271.74



Models are wearing XS

COL-



COMPOSITION:

94% Polyester - 6% Spandex.

PRODUCT CARE:

Dry Clean

DESCRIPTION:

Lightweight silk fabric with minimum stretch.

Sleeveless wrap around full length dress. (Includes side opening for full coverage in neckline).

Unlined.

Multiple ways of wrapping.

No zipper or buttons, just slip it on.



Camila II MIDI SKIRT

SIZE:

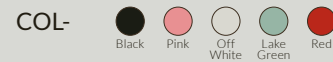


SRP: US \$460.00

WP: US \$200.00



Models are wearing XS



COMPOSITION:
94% Polyester - 6% Spandex.

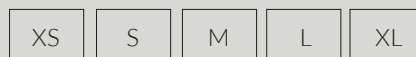
PRODUCT CARE:
Dry Clean

DESCRIPTION:
Lightweight silk fabric with minimum stretch.
Mid rise midi skirt.
Hidden waistline.
Unlined
Hook-and-eye and hidden zip closure at back.
Ruched detail at front.
River stone detail at waist.



El Pez LONG DRESS

SIZE:



SRP: US \$695.00

WP: US \$302.17



Models are wearing XS

COLOR: 
Ivory & Off white

COMPOSITION:

Bodice: 97% pa - 03% pue
Skirt 94% Polyester - 6% Spandex.

PRODUCT CARE:

Dry Clean

DESCRIPTION:

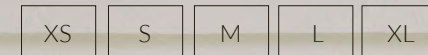
Textured fabric with stretch at bodice,
Lightweight silk fabric with minimum
stretch at skirt.
Long sleeves and drop waist maxi dress.
Round neckline.
Lined
Hook-and-eye and hidden zip closure
at back.



Flavial

LONG DRESS

SIZE:



SRP: US \$675.00

WP: US \$293.48

DESCRIPTION:


Textured fabric with stretch at bodice,
Lightweight silk fabric with minimum
stretch at skirt.

Fitted halter maxi dress.

Ruched details at bodice sides.

Hidden zip closure at back.

Lined.

COLOR: 
Ivory & Off white

COMPOSITION:

Bodice 97% pa - 03% pue

Skirt 94% Polyester - 6% Spandex

PRODUCT CARE:

Dry Clean

Models are wearing XS



Maribel MINI DRESS

SIZE:




SRP: US \$395.00

WP: US \$171.74



Models are wearing XS

COLOR:  Ivory

COMPOSITION:
97% pa - 03% pue.

PRODUCT CARE:
Dry Clean

DESCRIPTION:

Textured fabric with stretch.

Long sleeves mini dress.

Double Knot detail

Round neckline.

Lined.

Hook-and-eye and hidden zip closure at back.



Dulce CROP TOP

SIZE:



SRP: US \$260.00

WP: US \$113.04



Models are wearing XS

COLOR:  Ivory

COMPOSITION:
97% pa - 03% pue.

PRODUCT CARE:
Dry Clean

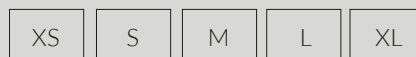
DESCRIPTION:

Textured fabric with stretch.
Short sleeves crop top.
Knot detail at front.
Round neckline.
Lined.
No zipper, just slip it on.



Laura

SIZE:




SRP: US \$340.00

WP: US \$147.82



Models are wearing XS

COLOR: 
Ivory

COMPOSITION:
97% pa - 03% pue.

PRODUCT CARE:
Dry Clean

DESCRIPTION:

Textured fabric with stretch.
Long sleeves wrap around top.
Multiple ways of wrapping.
Round neckline.
Lined.
No zipper or buttons, just slip on.



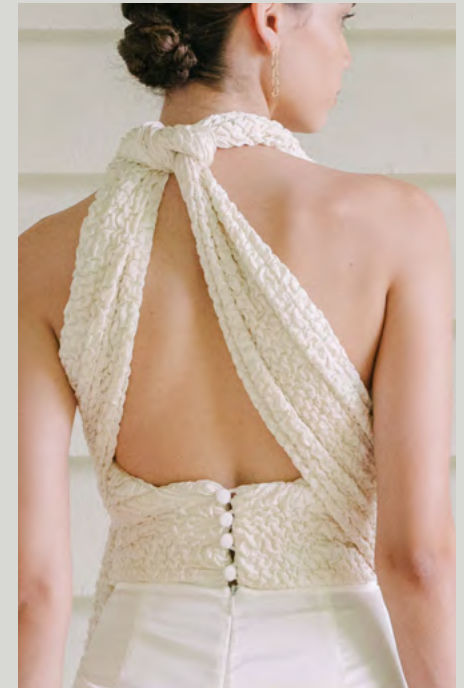
Salome IV TOP

SIZE:



SRP: US \$300.00

WP: US \$130.43



Models are wearing XS

COLOR: 
Ivory

COMPOSITION:
97% pa - 03% pue.

PRODUCT CARE:
Dry Clean

DESCRIPTION:

Textured fabric with stretch.
Wrap around top.
Multiple ways of wrapping.
Deep V neckline.
Lined.
Back buttons closure.



Puro

SIZE:

XS	S	M	L	XL
----	---	---	---	----

SRP: US \$240.00

WP: US \$104.35



Models are wearing XS

COLOR:  Ivory

COMPOSITION:
97% pa - 03% pue.

PRODUCT CARE:
Dry Clean

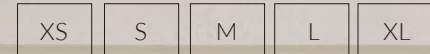
DESCRIPTION:
Textured fabric with stretch.
Halter bikini top, high waisted medium coverage bottom.
Lined.
Slip On.



Salado

ONE PIECE

SIZE:



SRP: US \$240.00

WP: US \$104.35

DESCRIPTION:

Textured fabric with stretch.

Front Knot bodysuit, high waisted full coverage bottoms.

Lined.

Slip it on

COLOR: Ivory

COMPOSITION:

97% pa - 03% pue.

PRODUCT CARE:

Dry Clean

Models are wearing XS



María Teresa

SIZE:



SRP: US \$275.00

WP: US \$119.57



Models are wearing XS

COLOR:  Ivory

COMPOSITION:
97% pa - 03% pue.

PRODUCT CARE:
Dry Clean

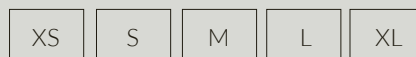
DESCRIPTION:

Textured fabric with stretch.
High waisted midi skirt.
Visible waistline.
Unlined.
No zipper or buttons, just slip it on.
Ruched detail at front.
Front opening.



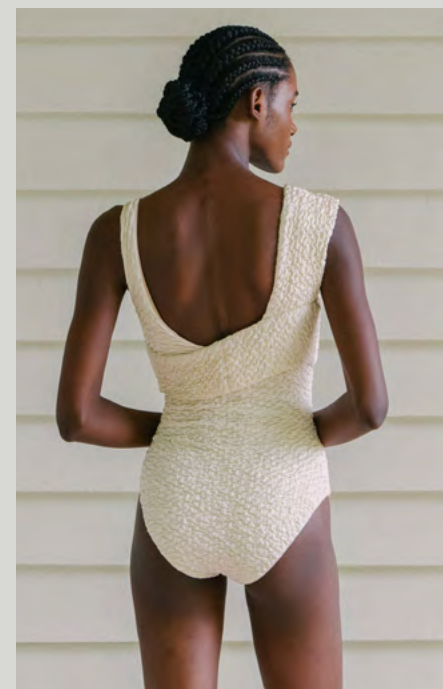
Lissette ONE PIECE

SIZE:



SRP: US \$240.00

WP: US \$104.35



Models are wearing XS

COLOR:  Ivory

COMPOSITION:
97% pa - 03% pue.

PRODUCT CARE:
Dry Clean

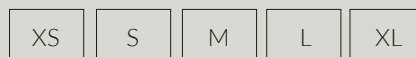
DESCRIPTION:

Textured fabric with stretch.
Sleeveless bodysuit.
Front asymmetric knot detail.
Scoop neckline.
Lined.
No zipper or buttons, just slip on.



Vavon

SIZE:




SRP: US \$340.00

WP: US \$147.83



Models are wearing XS

COLOR: 
Ivory

COMPOSITION:
97% pa - 03% pue.

PRODUCT CARE:
Dry Clean

DESCRIPTION:
Textured fabric with stretch.
Wrap around pareo skirt.
Relaxed fit.
Unlined.



Mañeca TOP

SIZE:




SRP: US \$310.00

WP: US \$134.78



Models are wearing XS

COLOR:  Natural White

COMPOSITION:
80% Cotton - 20% Hemp.

PRODUCT CARE:
Dry Clean

DESCRIPTION:

Structured weaved material, non-stretch.
Strapless structured corset top.
Removable straps with mother pearl details.
Straight neckline.
Lined.
Hidden zip closure at back.



Coral

SIZE:




SRP: US \$415.00

WP: US \$180.43



Models are wearing XS

COLOR:  Natural White

COMPOSITION:
80% Cotton - 20% Hemp.

PRODUCT CARE:
Dry Clean

DESCRIPTION:
Structured weaved material, non-stretch.
A-line mini skirt.
Frayed fabric details.
Visible waistline.
Lined.
Hook-and-eye and hidden zip closure at back.



Engracia JACKET

SIZE:




SRP: US \$595.00

WP: US \$258.70



Models are wearing XS

COLOR:  Natural White

COMPOSITION:
80% Cotton - 20% Hemp.

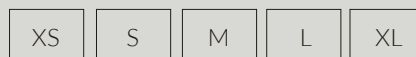
PRODUCT CARE:
Dry Clean

DESCRIPTION:
Structured weaved material, non-stretch.
Long sleeves jacket.
Round neckline.
Lined.
Hidden snap clasp closure.
Mother pearl detail at collar.
Frayed fabric details.



Chantalle

SIZE:



SRP: US \$285.00

WP: US \$123.91



Models are wearing XS

COLOR:  Natural White

COMPOSITION:
80% Cotton - 20% Hemp.

PRODUCT CARE:
Dry Clean

DESCRIPTION:
Structured weaved material, non-stretch.
Strapless structured corset crop top.
Removable straps with mother pearl details.
Straight neckline.
Lined.
Zip closure at back.



Laurita MAXI SKIRT

SIZE:




SRP: US \$475.00

WP: US \$206.52



Models are wearing XS

COLOR:  Natural White

COMPOSITION:
80% Cotton - 20% Hemp.

PRODUCT CARE:
Dry Clean

DESCRIPTION:

Structured weaved material, non-stretch.
High waisted structured maxi skirt.
Visible waistline.
Lined.
Hook-and-eye and hidden zip closure at back.
Frayed fabric details.



Ana

SIZE:




SRP: US \$510.00

WP: US \$221.74



Models are wearing XS

COLOR:  Natural White

COMPOSITION:
80% Cotton - 20% Hemp.

PRODUCT CARE:
Dry Clean

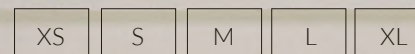
DESCRIPTION:
Structured weaved material, non-stretch.
Sleeveless structured midi dress.
Scoop neckline.
Lined.
Hook-and-eye and hidden zip closure at back.
Frayed fabric details.



Isabel

DRESS

SIZE:



SRP: US \$495.00

WP: US \$215.22

DESCRIPTION:

Structured weaved material, non-stretch.


Strapless structured maxi dress.

Straight neckline.

Lined.

Hook-and-eye and hidden zip closure
at back.

Frayed fabric details.

COLOR:  Natural
White

COMPOSITION:

80% Cotton - 20% Hemp.

PRODUCT CARE:

Dry Clean

Models are wearing XS



Ana Maria


SIZE:

XS	S	M	L	XL
----	---	---	---	----

SRP: US \$285.00

WP: US \$123.91



COLOR: 
Ivory

COMPOSITION:
97% pa - 03% pue.

PRODUCT CARE:
Dry Clean

DESCRIPTION:

Textured fabric with stretch.

Balloon mini bag.

Lined.

Fringe and mother pearl details.



Yorkenis

SIZE:



SRP: US \$220.00

WP: US \$95.65



COLOR:  Natural White

PRODUCT CARE:
Dry Clean

DESCRIPTION:

Rope belt.
Knots details.
Mother pearl details.
Metal Closure at back



Marisol

SIZE:



SRP: US \$190.00

WP: US \$82.6

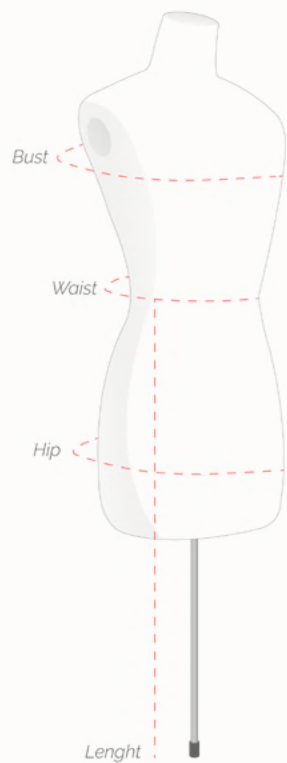


COLOR:  Natural White

PRODUCT CARE:
Dry Clean

DESCRIPTION:
Rope belt.
Hanging mother pearl details.
Metal Closure at back

Size CHART



Bust
Equivalent to the full circumference
from back to bust.

Waist
Equivalent to the full circumference
of your waist.

Hip
Equivalent to the full circumference
of your hip.

Size	XS	S	M	L	XL
Bust	31-32	34-36	36-38	38-40	41-43
Waist	24-25	26-28	28-30	30-32	33-35
Hip	34-35	36-38	38-40	42-44	44-46
Length	45	45	45	45	45

- Smaller Measurements apply to stretch materials.
- Size, fit and measurements may vary from one style to another.

Terms and CONDITIONS:

CONDITIONS

Minimum order US\$5,000.00.

Delivery timeline is 6 to 8 weeks after order has been processed.

Payment terms: 50% to place an order and 50% 15 calendar days after order has been received and verified.

SHIPPING INFORMATION

DHL shipping is not included and will be notified after the order has been processed.

Changes and returns must be notified within 72 hours upon reception.



MAYLEVASQUEZ.COM